

blank'fix-table

- ▶ Make-ready table for blank'fix⁺
- ▶ Set aligned by Bobst Centerline*

BOXPLAN GmbH & Co. KG
Wilhelm-Moriell-Strasse 7
78315 Radolfzell
Germany

Fon +49(0)7732-982 99-70
Fax +49(0)7732-982 99-79
info@boxplan.de
www.boxplan.de



Ideal, economic work place to prepare upper blanking form.

Two sizes are available:
Format up to 1060mm
Format up to 1620mm



*Centerline is a registered trade mark of Bobst Mex SA

The complete blank'fix⁺ system

The basic **blank-fix⁺** set consists of:

- ▶ basic equipment of separating blocks and telescopic pressers
- ▶ prepared for receiving a gripper margin separator

Optionally available:

- ▶ fastening parts for gripper margin separator
- ▶ additional separating blocks
- ▶ additional telescopic pressers
- ▶ ergonomic setup table for positioning the separating blocks according to the lower blank separating tool

Also available:

- ▶ Universal lower blank separating frame for faster setup of the lower blank separating bars. Every position can be securely fixed using grid tooting.

All mentioned trade names are properties of their respective owners.
With reservation of technical alteration

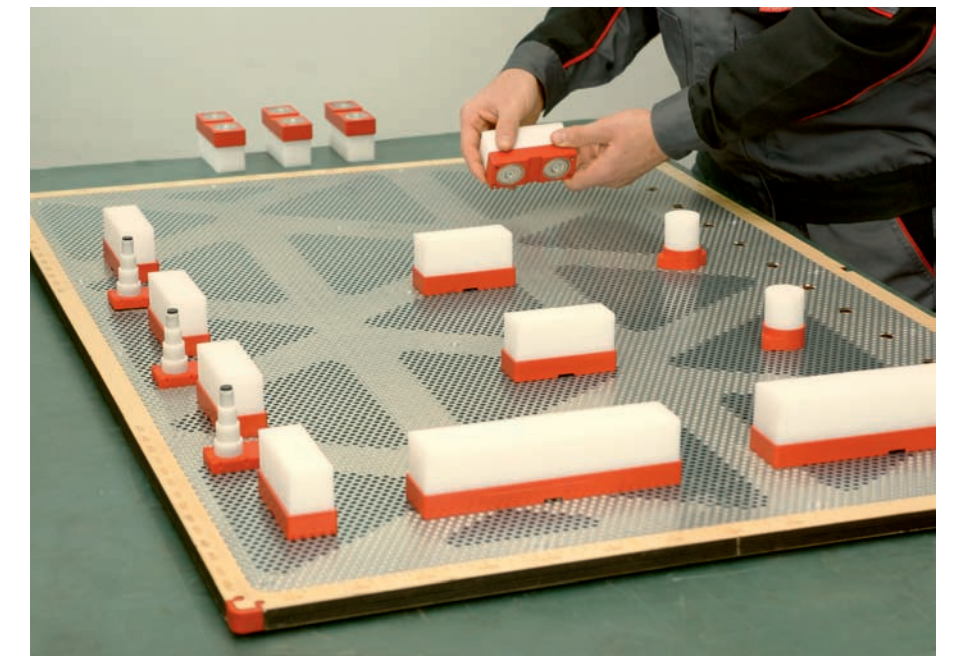
contact:



Your Problem Solving Partner
6840 Meadow Lane | Alpharetta, GA 30005
cartoncraftsupply.com | 800.480.2486

blank'fix⁺

Modern sheet and blanking delivery



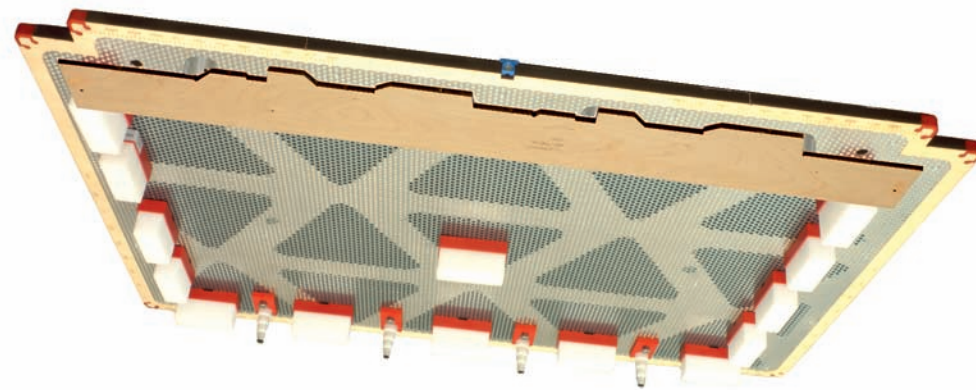
Universal, fix, simple!

blank'fix⁺

- ▶ Universal and easy division of separating blocks
- ▶ Can be used for all die-cutters*

blank'fix⁺ is a universal upper blank separating tool, based on our blank'fix system as proven over many years. The reusability of all parts ensures considerable savings on external tooling costs.

One system - many benefits!



- ▶ suitable for all die-cutters with blank separation*
- ▶ ideal for small runs or initial orders
- ▶ quick and easy blank arrangement possible
- ▶ with the optional gripper margin separator, a sheet stack is quickly set up
- ▶ additional and newly developed telescopic pressers make blank separation even easier

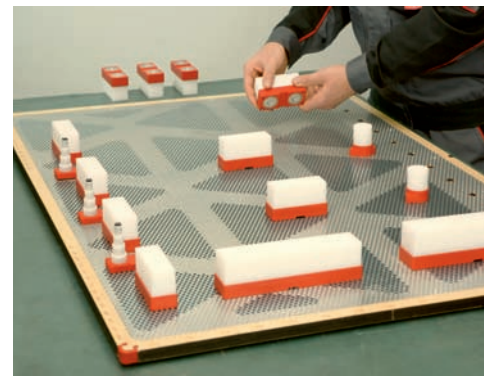
blank'fix⁺

- ▶ A finished tool in just a few minutes
- ▶ Quick adjustment to changes



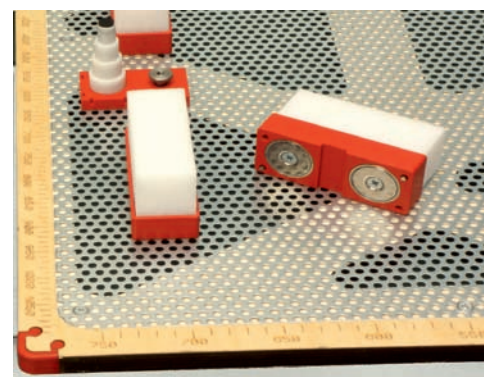
You can forget about complicated systems that require clamping using tools which is extremely time consuming.

No more worn-out Velcro that no longer holds the separating blocks securely on the board.



With the further improved blank'fix+, the separating blocks of differing size are simply positioned on a special galvanized and perforated plate and firmly anchored there using super-strong magnets.

Practically any blank arrangement can be prepared in a short time.

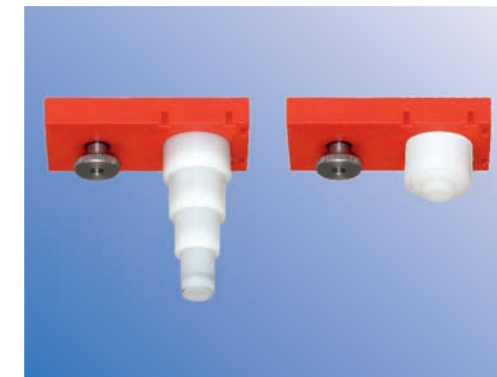


The foam is very firm and can easily be cut to specific tool sizes. The strength and durability of our magnets has been proven for many years.

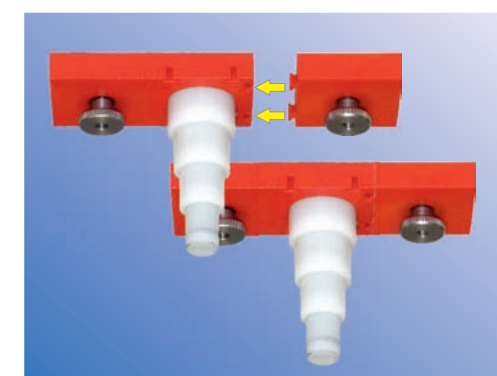
Additional metal pins in the separating blocks hook into the perforated base plate and securely fix the separating block.

multi'presser

- ▶ No tools needed for fastening
- ▶ Flexible telescopic pressers



Only blank'fix+ has easily positioned and specially made telescopic pressers. The pressers permit secure fixing of the side and rear edges and/or double cuts.



In addition, adaptable holders with magnets are available: these magnet holders fasten securely into place on three sides of the telescopic presser.



The magnets hold the telescopic presser extremely tight on the perforated plate. This connection can be easily released using a special lifter. The T-nut here acts as the anchor in which the lifter engages.